



AKAI

CD/MP3-RECIVER

Model:
ACR-141 MP

SERVICE MANUAL

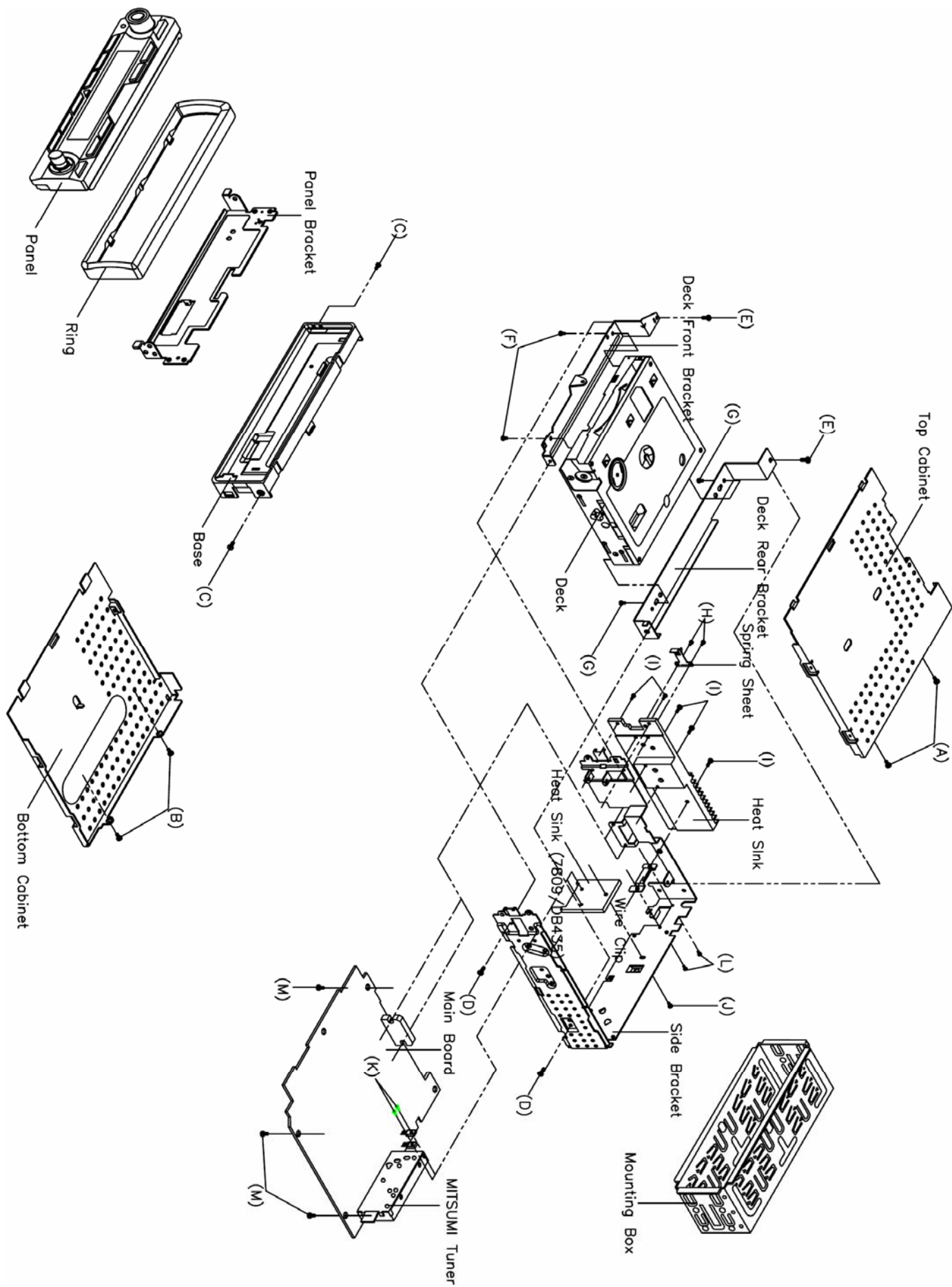
CONTENTS

	Page
Disassembly Instructions	3
Disassembly Diagram.....	4
Operation Check.....	5
Block Diagram	6
Alignment Locations	7
Alignment Procedures	8
Printed Circuit Boards.....	10
Exploded Views (Panel).....	16
Exploded View Parts Lists (Panel).....	17
Exploded Views (Cabinet)	18
Exploded View Parts Lists (Cabinet)	19
Exploded Views (Deck).....	21
Exploded View Parts Lists (Deck).....	22
Schematic Diagram	24
Electrical Parts List	27
Specifications.....	34

DISASSEMBLY INSTRUCTIONS

1. Using the unlock key that came with the unit or a similar tool, unlock the Mounting Box and remove toward the rear of the unit.
2. Remove two screws (A) located on the rear of the top cabinet then remove the Top Cabinet.
3. Remove two screws (B) located on the rear of the bottom cabinet then remove the Bottom Cabinet.
4. Take out the Panel; The Ring and the Panel Bracket.
Remove two screws (C) from each side of the base then remove the Base.
5. Remove two screws (D) from on the right side of the side bracket.
Remove two screws (E) from on the left side of the side bracket.
6. Remove two screws (F) from under the deck front bracket then remove the Deck Front Bracket.
Remove two screws (G) from under the deck rear bracket then remove the Deck Rear Bracket and the Deck.
7. Remove two screws (H) from on the left side of the heat sink then remove the Spring Sheet.
8. Remove five screws (I) from on the left side of the heat sink then remove the Heat Sink.
9. Remove the screw (J) from on the back of the side bracket and remove two screws (K) from on the main board then remove the Heat Sink (7809/DB435).
10. Remove the screw (L) from on the back of the side bracket then remove Wire Clip.
11. Remove three screws (M) from under the main board then remove the Side Bracket and the Main Board.

DISASSEMBLY DIAGRAM



OPERATION CHECK

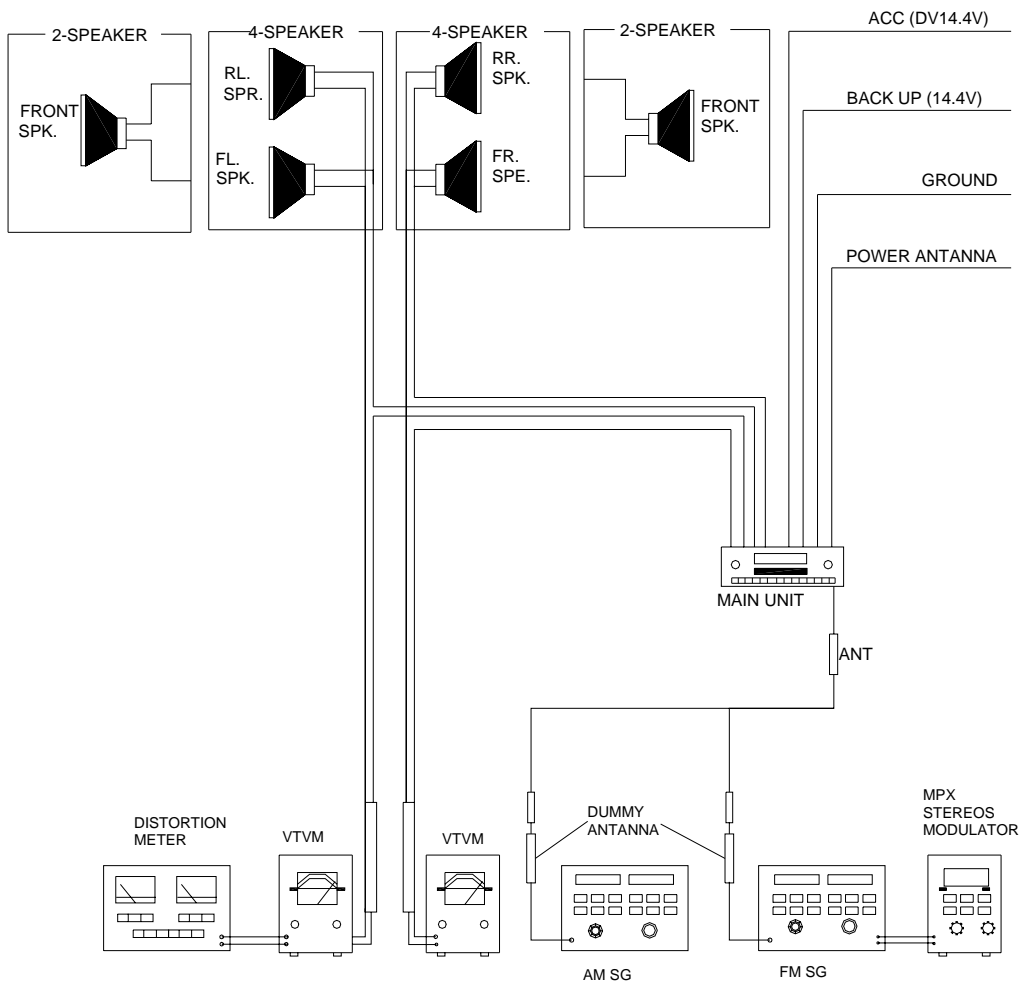
GENERAL SPECIFICATIONS OF SIGNAL

Standard frequency	FM	98.1 MHz (65.0, 74.0MHz)	(87.5, 107.9 MHz)
	MW	1000 kHz (530, 1710 kHz)	
Signal output	FM	1mV	
	MW	5 mV	
Modulation	MW	400 Hz	30% MOD.
	FM Stereo	1 kHz	75kHz DEV.

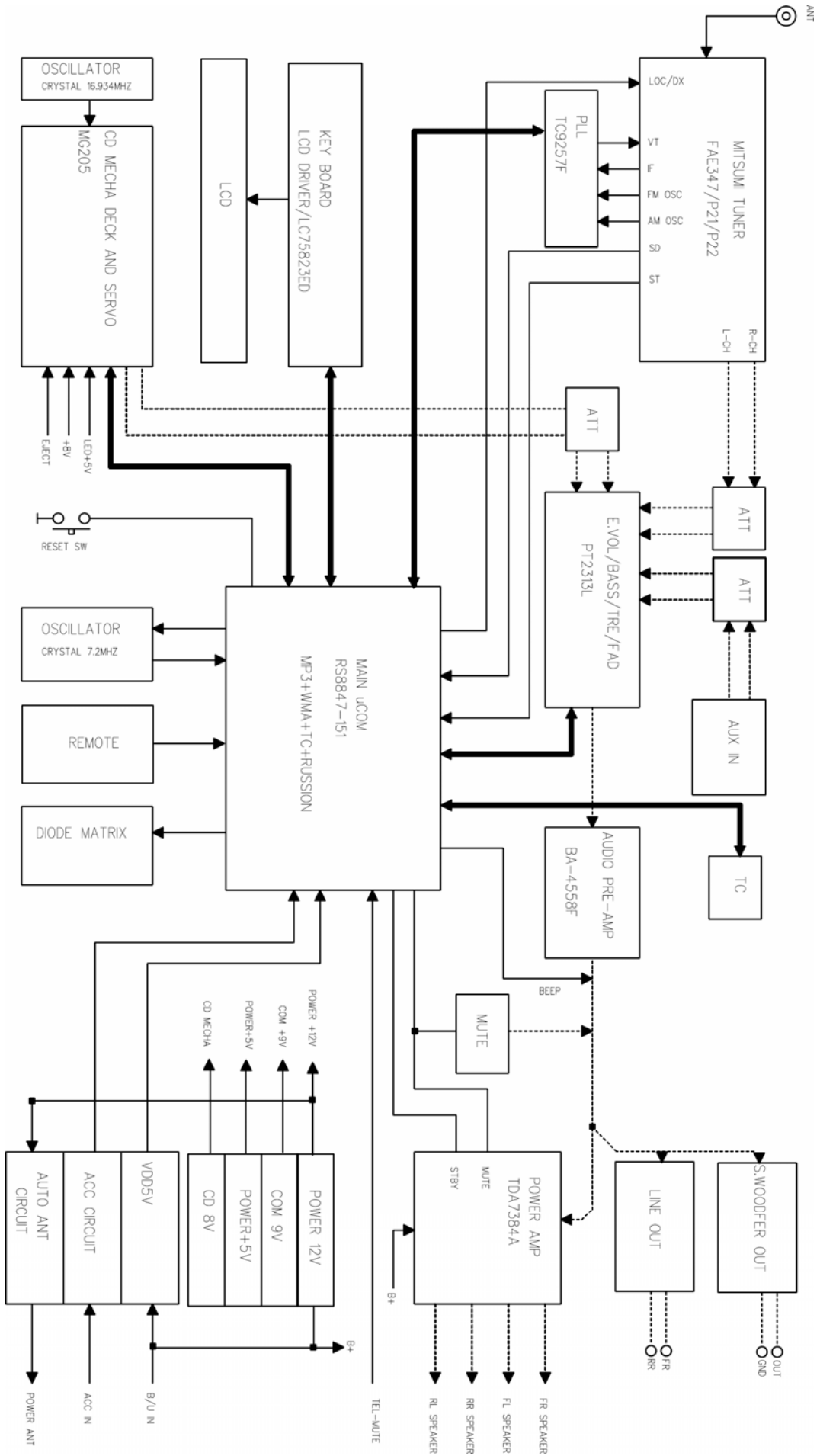
AF output level	FM/MW
Power source voltage	DC 14.0V (Backup voltage is the same as this)
AF load impedance	4 ohm pure resistance
Balance	Center position of level
Tone	Center position

The signal strength read in this section is voltage on the antenna.

Test Diagram

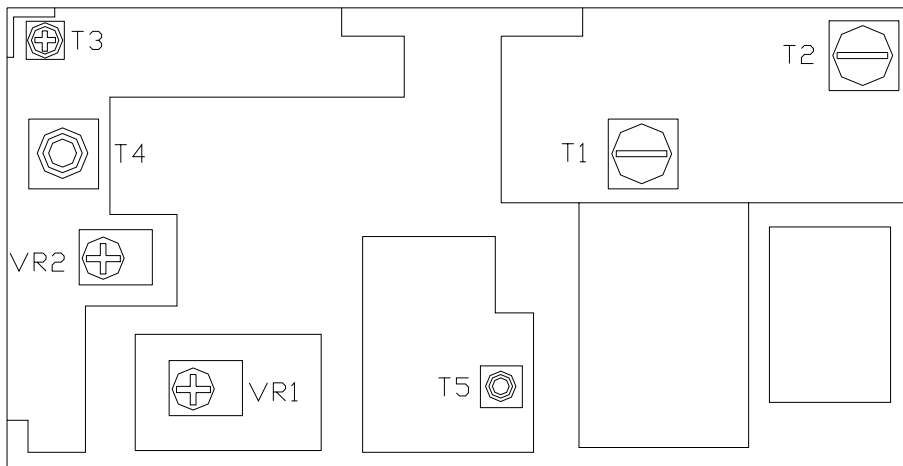


BLOCK DIAGRAM



ALIGNMENT LOCATIONS

FM/MW/LW TUNER



ALIGNMENT PROCEDURES

FM ADJUSTMENT

Equipment Required

- AM IF/RF signal generator
- Solid-state voltmeter (SSVM)
- Regulated DC power supply
- 2-CH voltmeter
- Distortion meter

FM Alignment Using FM Signal Generator

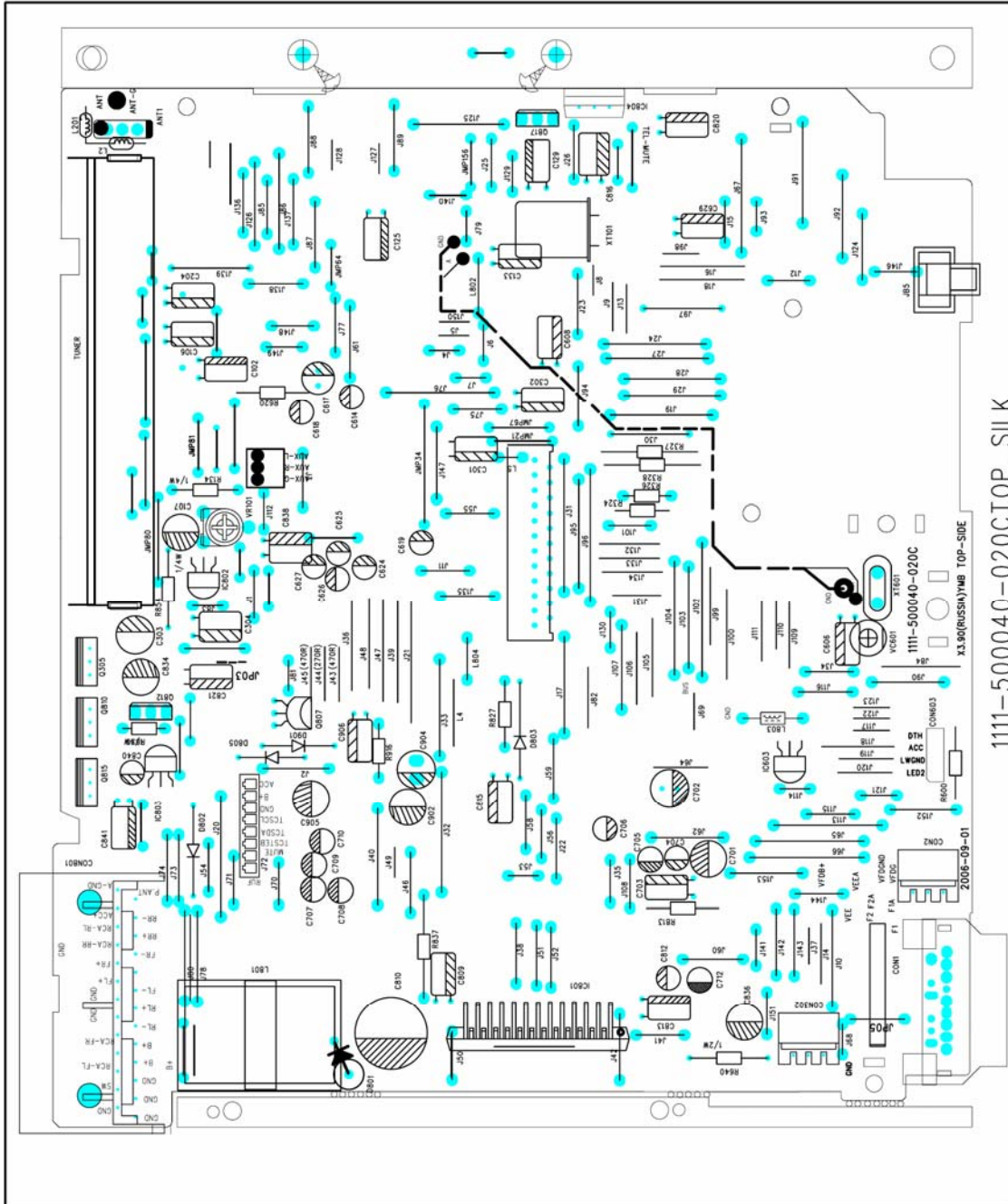
Note: Press the radio power switch to on the radio. Signal generator output must be kept as low as possible to avoid overload and clipping.

Step	Generator Coupling	Generator	Display Setting	Adjustment	Remarks
Stereo Separation	Signal Generator to antenna receptacle	98.1 MHz Int. 1 kHz Dev. 75 kHz L+R = 90 % pilot = 10 %	98.1 MHz	VR1	Adjust AF output power at maximum separating more than 30 dB
FM SNC Adjustment	98.1 MHz Dev. 75 kHz L+R=90 % Int. 1 kHz 60dB μ V output	98.1 MHz @ 40 dB μ	98.1 MHz	VR2	Stereo Separation 25 dB (\pm 5 dB)
Stop SENS.	Signal Generator to antenna receptacle	98.1 MHz Mod. 1kHz Dev 75kHz	98.1 MHz	VR3	Adjust AF to stop station.

Note: The tuner module is well-adjust and adjustment is not recommended.

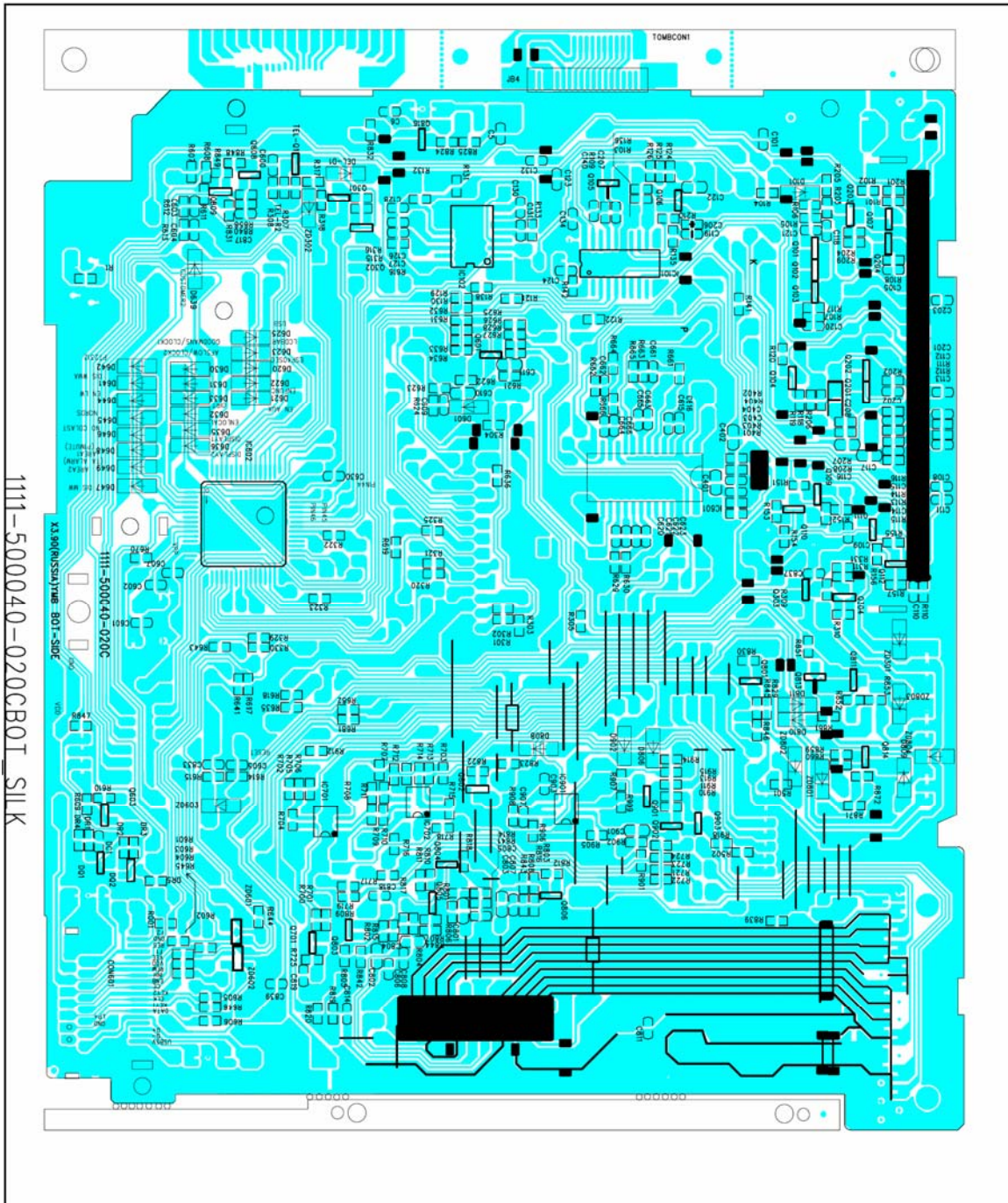
PRINTED CIRCUIT BOARDS

MAIN BOARD



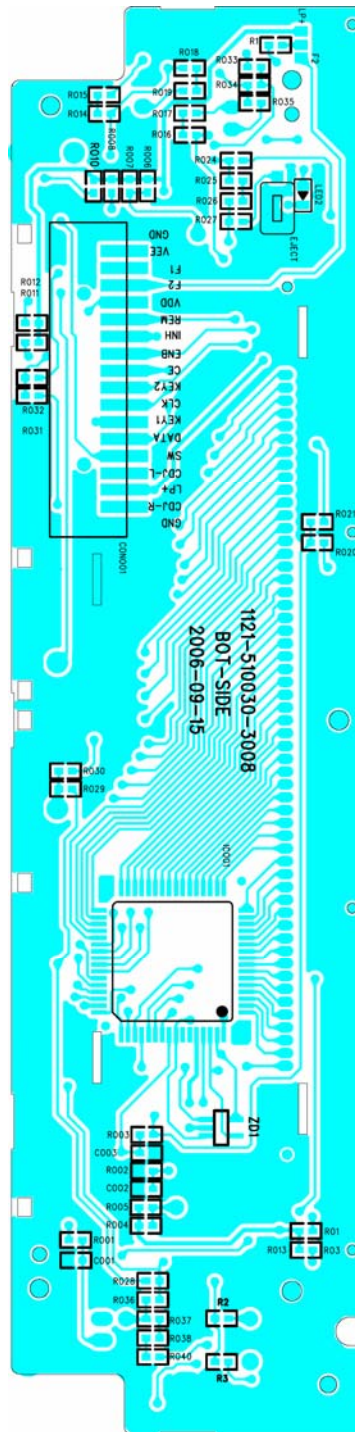
TOP VIEW

MAIN BOARD



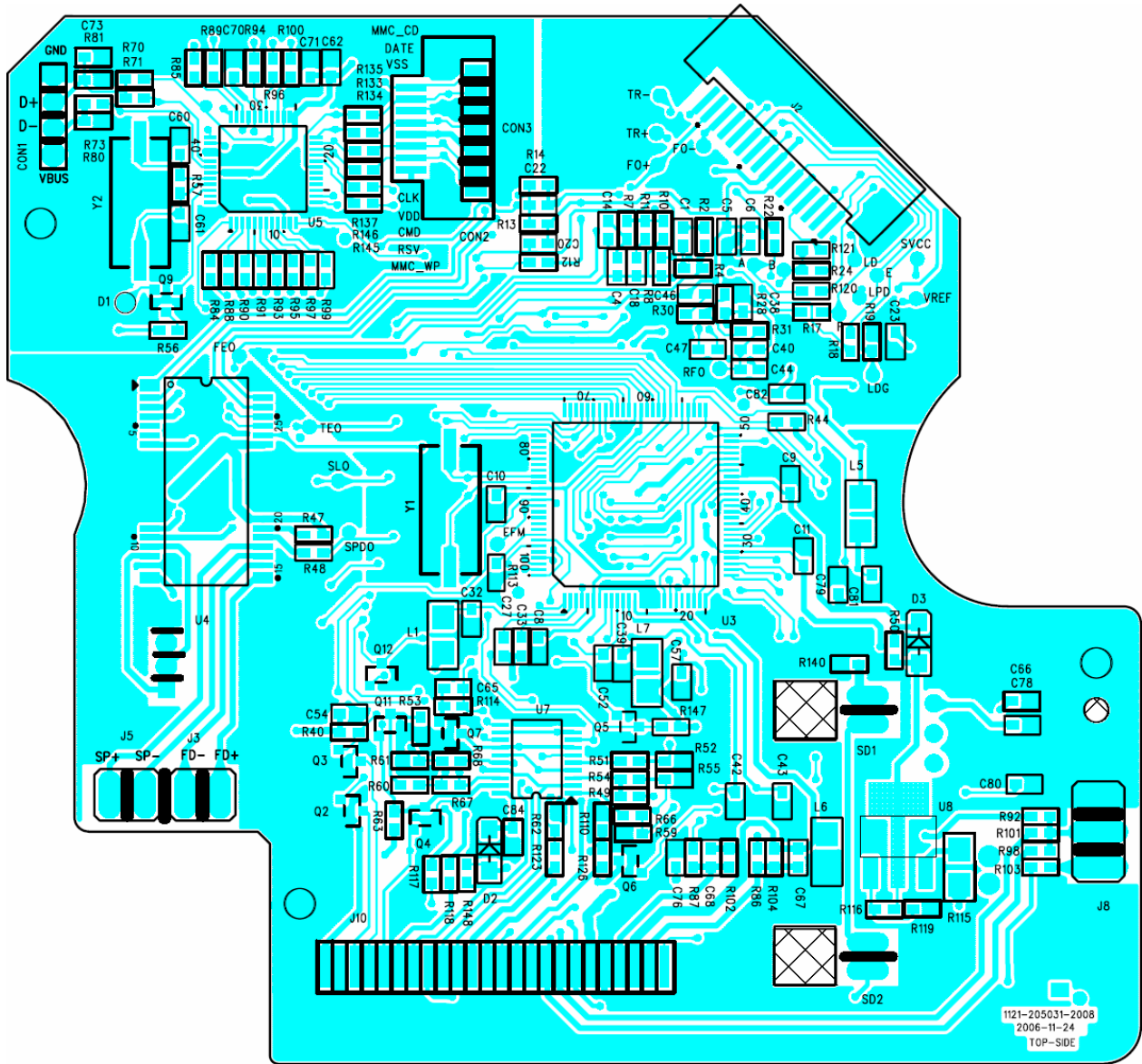
BOTTOM VIEW

KEY BOARD



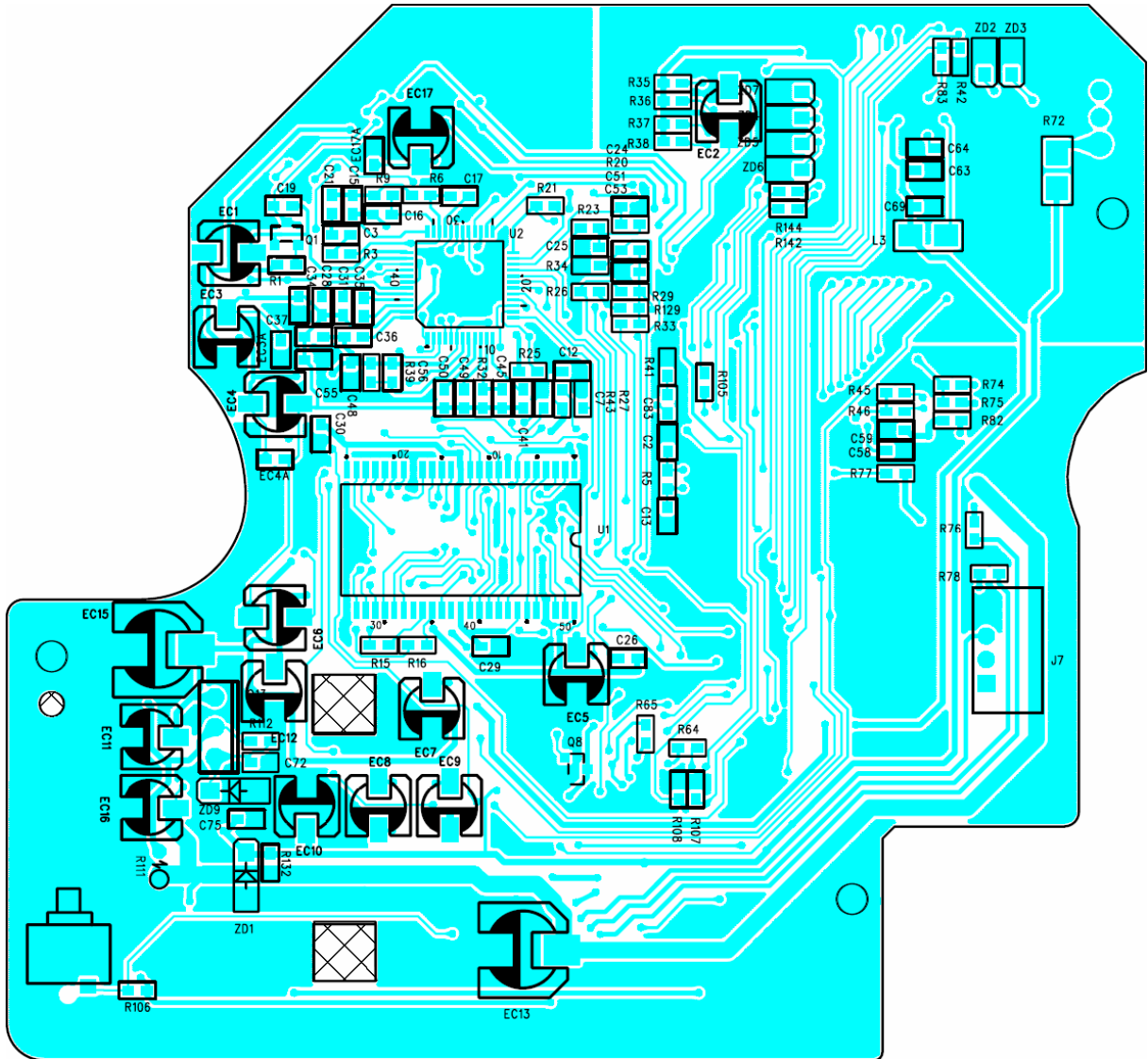
BOTTOM VIEW

CD SERVO BOARD



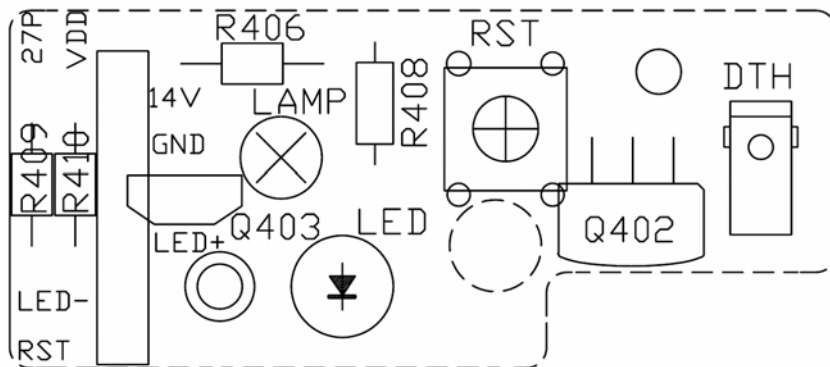
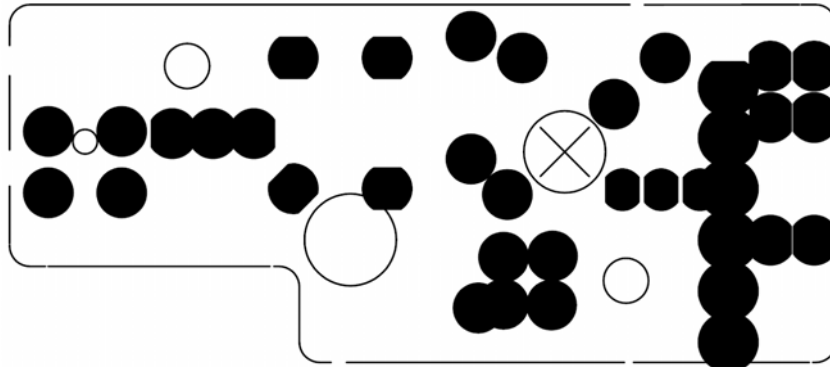
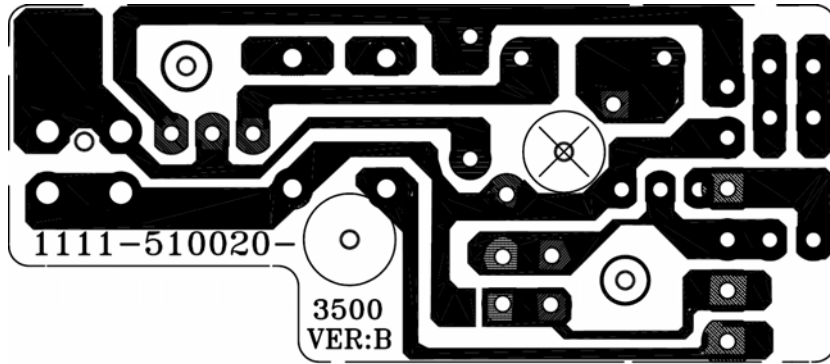
TOP VIEW

CD SERVO BOARD



BOTTOM VIEW

LAMP BOARD



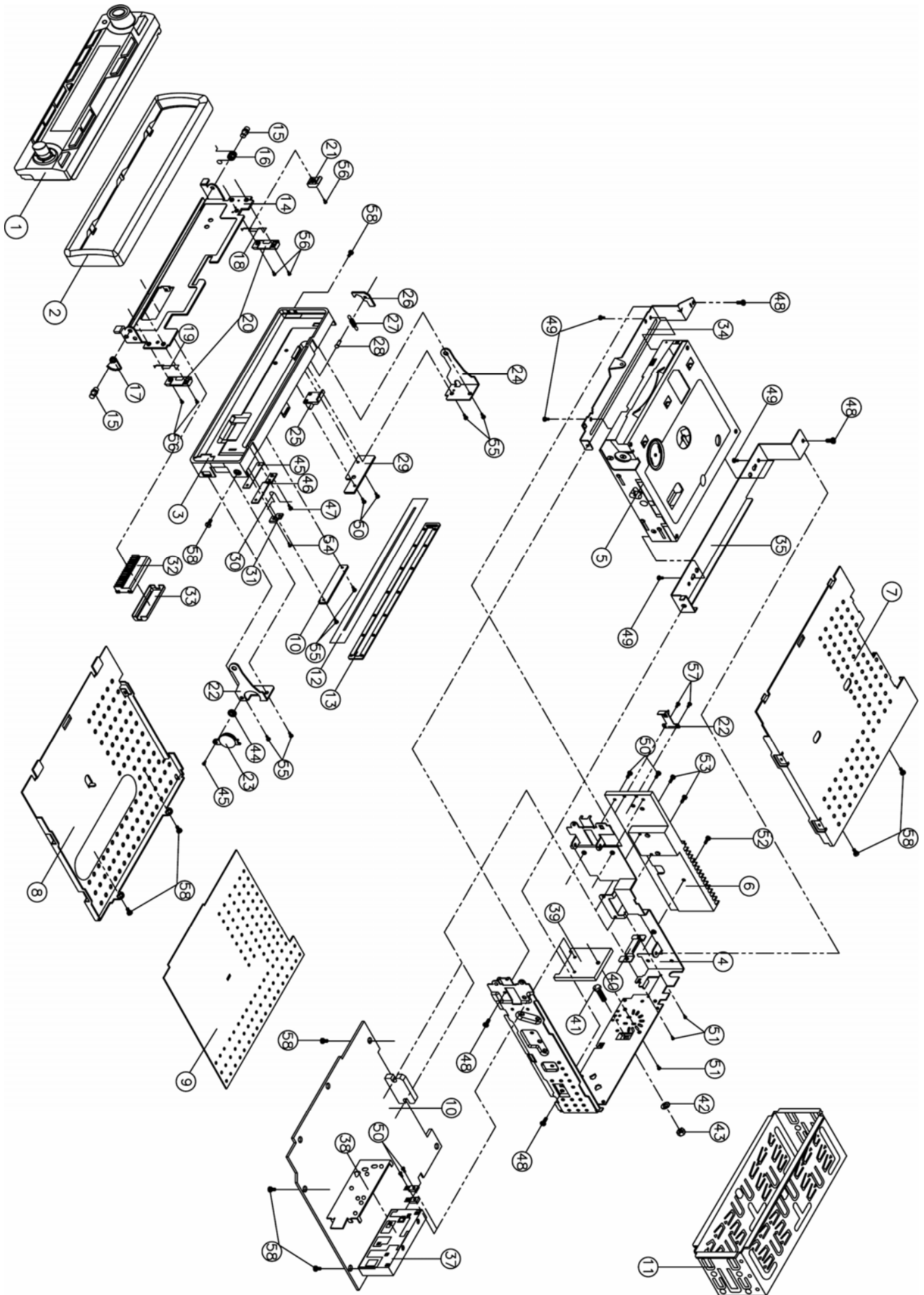
EXPLODED VIEW PARTS LIST

PANEL

Ref. No.	Description	RS Part No.	Mfr's Part No.
1	Lens: CD-F1628X3.82.25/WMA N/SW(S.PY BLK/WHT) ROHS		5300-0G6230-39W
2	T. Panel X3.17.9-F N/RM(S.N1202/B) W/O BRAND ROHS		5100-0G6220-891
3	Bottom Cabinet ROHS		5100-0G6221-00
4	Open Knob For FD (S. N1202/Black) ROHS		5200-0G6224-81B
5	Open Knob Spring ROHS		3600-000101-00
6	Volume Knob Cover (S. N1202) ROHS		5200-0G6223-80
7	Volume Knob Backlight ROHS		5200-0G6232-00
8	Soft PVC Sheet 0.10MM ROHS		4300-0H6202-00
9	IR Lens (S. N1202) ROHS		5200-0G6231-80
10	Number 1/PAU-3/BND Knob (L-Up) (S.N1202) ROHS		5200-0G6227-82
11	Number 4/SHF-6 Knob (L-Up) (S.N1202) ROHS		5200-0G6230-82
12	7MOD/AS-PS Knob (L-Up) (S. N1202) ROHS		5200-0G6226-83
13	EQ/DISP-0/PWR Knob (L-Up) (S. N1202) ROHS		5200-0G6225-82
14	Reset Knob (S. N1202) ROHS		5200-0G6234-80
15	SCN Knob (S.N1202/Black) ROHS		5200-0G6229-82B
16	TRK/8-9 Knob Cover (S. N1202/Black) ROHS		5200-0G6228-82B
17	Enter Key Back Light +SPY White ROHS		5200-0G6233-01
18	Key Board		1121-510030-3008
19	CD115 Rotary Encoder VOL ROHS		1800-000115-00
20	LCD Cover 90.4MM/BLK ROHS		3900-0H6201-00
21	CD173 LCD TN NEG COLOR PIN TYPE ROHS		2700-510000-110Y
22	LCD Felt Sheet ROHS		4400-0A7301-01
23	LED B.L White 109X20.5 ROHS		0200-001730-09
24	Eject Knob-F (L-Up) (S. N0000) ROHS		5200-0G6239-01
25	VOL Knob (S.N0000) ROHS		5200-0G6222-30
26	Screw Ø2X8 BA/ST Black ROHS		4000-012008-21

EXPLODED VIEW

CABINET



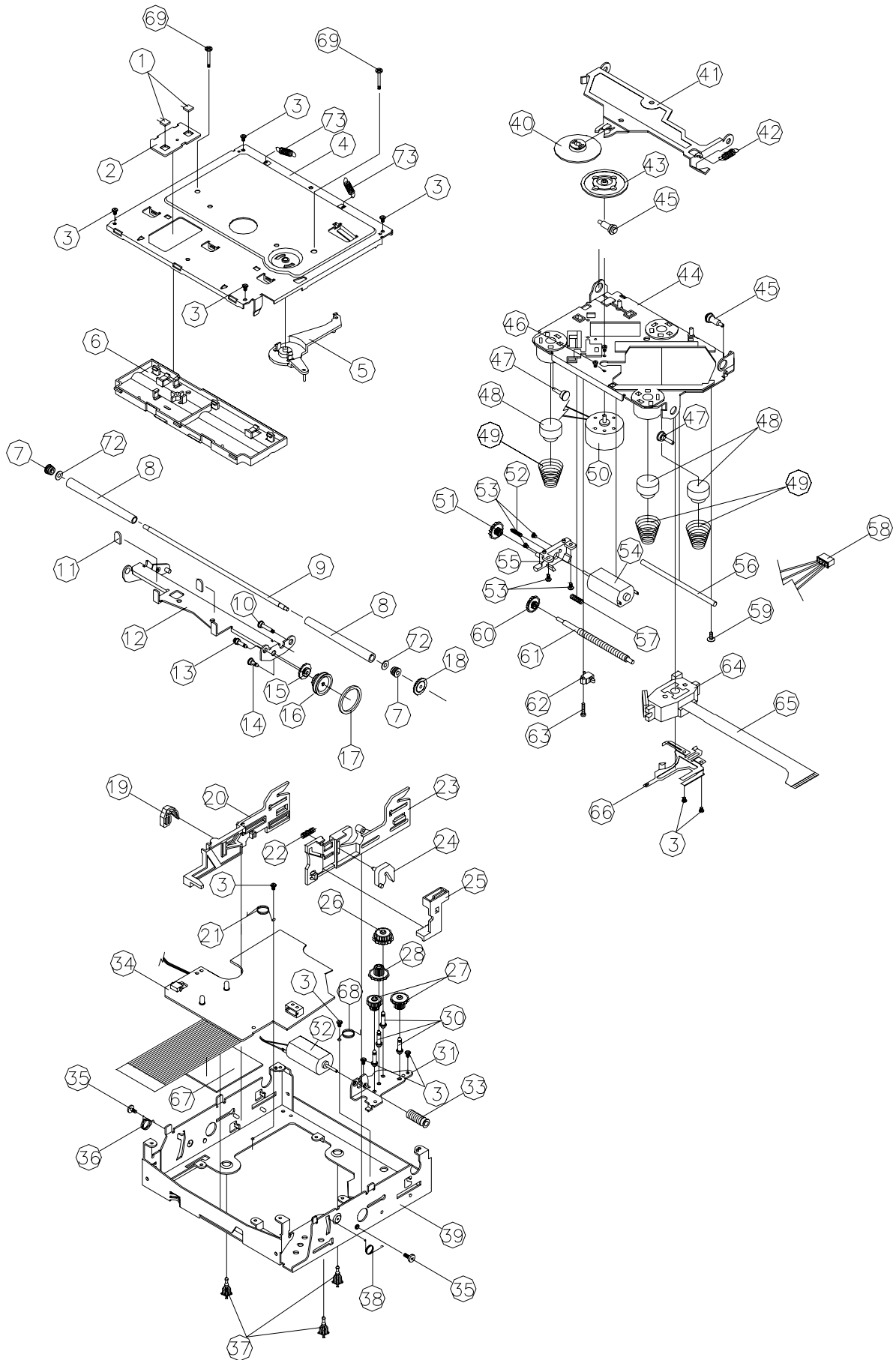
EXPLODED VIEW PARTS LIST

CABINET

Ref. No.	Description	RS Part No.	Mfr's Part No.
1	Panel		
2	Ring (S.N1202) ROHS		5100-016228-80S
3	Base ROHS		5100-0H6225-00
4	U Bracket (CD200/Wire) ROHS		6100-0N0201-00
5	CD MECH. MG205 (205) ROHS		9400-002050-01
6	Heat Sink (For Wire) ROHS		6100-0N0204-00
7	Top Cabinet ROHS		6100-0B0105-01
8	Bottom Cabinet (For Wire) ROHS		6100-0B0114-01
9	Main Fiber ROHS		3500-0B0101-00
10	Main Board		1111-500040-020C
11	Mounting Box (072) ROHS		6100-007211-03
12	Shade ROHS		8100-069005-03
13	CD Windows Sheet ROHS		4300-0A3103-00
14	Panel Bracket (18PIN) ROHS		6100-0H6201-00
15	Pipe ROHS		3400-040201-00
16	Bracket Spring ROHS		3600-002922-03
17	Gear 1 (POM) ROHS		5200-040237-00
18	Panel Bracket Spring (Left) Electroplate ROHS		3600-004901-02
19	Panel Bracket Spring (Right) Electroplate ROHS		3600-004902-02
20	GIB (POM) ROHS		5200-040235-00
21	Open Adaptor ROHS		5200-010564-00
22	Right Bracket ROHS		3900-000104-00
23	Gear 2 (POM) ROHS		5200-040238-00
24	Left Bracket (CD-049) ROHS		3900-004908-00
25	CD Back Light (PC) ROHS		5200-004937-00
26	Hook (POM) ROHS		5200-040236-00
27	Release Spring ROHS		3600-000102-00
28	Hook Shaft ROHS		3400-000101-00
29	Lamp Board		1111-510020-3500
30	Right Spring (Mark 1) ROHS		3600-068301-00
31	Spring Bracket ROHS		5200-016255-00
32	18PIN SKT With Flexible PCB (DVDD1628) ROHS		2500-0F1628-18A
33	Socked Bracket (18PIN) ROHS		5200-0A1235-00
34	Deck Front Bracket (CDN217) ROHS		3900-0N2101-00
35	Deck Rear Bracket ROHS		3900-0B0101-00
36	Spring Sheet ROHS		3900-0E2003-00
37	M.FAE347/P21/P22 East Furepe 1 Pack 65-108MHJ ROHS		2900-000347-03
38	FM Cover ROHS		3900-0W2001-00
39	Heat Sink (7809/DB435) (0.017KG) ROHS		3900-0B0118-00
40	Wire Clip 1.0MM (0.013KG) ROHS		3900-0B1415-00

Ref. No.	Description	RS Part No.	Mfr's Part No.
41	Screw Ø5 X 18 HH ROHS		4000-005018-04
42	Spring Washer M5 ROHS		3500-050001-00
43	Hexagon Nut M5 ROHS		3900-040005-00
44	Damper Gear-Assy ROHS		9300-040201-00
45	Wire Fix Fiber (18PIN) ROHS		3500-008303-00
46	Wire Fix Sheet 18PIN (0.004KG) ROHS		3900-008303-00
47	SCREW Ø2X4 PA/ST ROHS		4000-002004-10
48	SCREW Ø2.6X4 PH/TAPTITE ROHS		4000-002604-03
49	SCREW Ø2.6X5 BH/TAPTITE ROHS		4000-002605-03
50	SCREW Ø2.6X6 BH/MS ROHS		4000-002606-01
51	SCREW Ø2.6X8 BH/MS ROHS		4000-002608-01
52	SCREW Ø2.6X10 BH/MS ROHS		4000-002610-01
53	SCREW M2.6X20 PH/MS ROHS		4000-002620-00
54	SCREW Ø2X4 BH/ST ROHS		4000-012004-00
55	SCREW Ø2X6 PA/ST (Black) ROHS		4000-012006-20
56	CAMERA SCREW M2X3 P/H (Black) ROHS		4000-060203-20
57	SCREW Ø2.6X3 BH/MS ROHS		4000-002603-01
58	SCREW Ø2.6X4 BH/MS ROHS		4000-002604-01

EXPLODED VIEW (DECK)



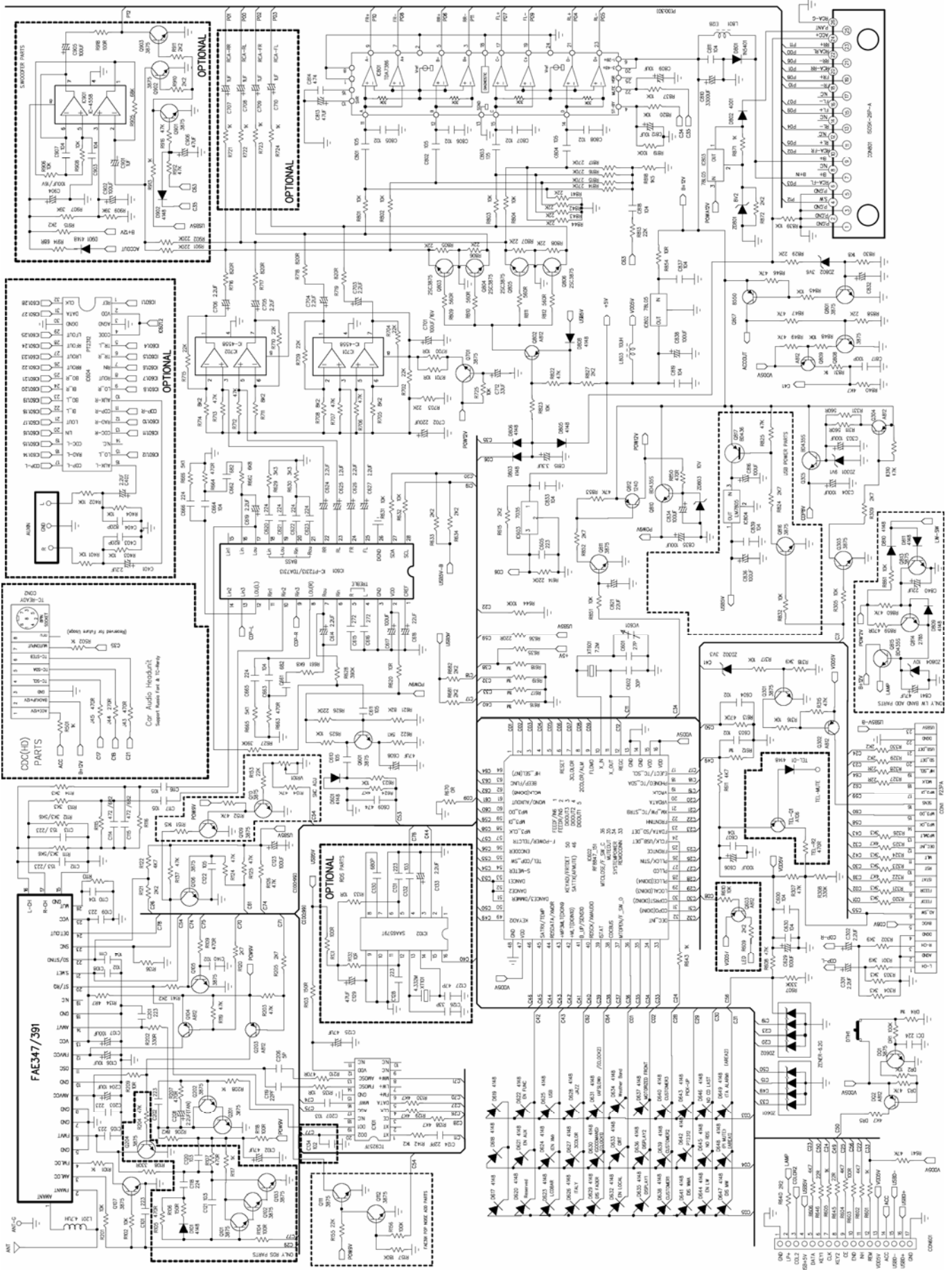
EXPLODED VIEW PARTS LIST (DECK)

Ref. No.	Description	Parts No.	Q'ty
1	SENSOR	ST-23G	2
2	SENSOR PCB	FR	1
3	SCREW	CA/H 0" TT 2*3	12
4	COVER-UPPER	SECC T1.0	1
5	LEVER DISC	POM (F20-03)	1
6	GUIDE UP	POM (F20-03)	1
7	BUSHING ROLLER	POM (F20-03)	2
8	ROLLER DISC	SLICON	2
9	SHAFT ROLLER	SUS 303	1
10	PIN ROLLER	SUM24L-NI (PLATE)	1
11	PVC CAP	PVC	2
12	B/K ROLLER	SECC T1.0	1
13	PIN PULLEY	SUM24L-NI (PLATE)	1
14	PIN IDLE	SUM24L-NI (PLATE)	1
15	GEAR IDLE	POM (F20-03)	1
16	GEAR PULLEY	POM (F20-03)	1
17	BELT PULLEY	CR-WRT	1
18	GEAR ROLLEY	POM (F20-03)	1
19	LOCKER (L)	POM (F20-03)	1
20	CAM (L)	POM (F20-03)	1
21	S/P CAM (L)	SUS304WPB	1
22	S/P RACK	SUS304WPB	1
23	CAM (R)	POM (F20-03)	1
24	LOCKER ®	POM (F20-03)	1
25	GEAR RACK	POM (F20-03)	1
26	GEAR LOAD ©	POM (F20-03)	1
27	GEAR LOAD (D)	POM (F20-03)	1
28	GEAR LOAD (B)	POM (F20-03)	1
29	GEAR LOAD (A)	POM (F20-03)	1
30	PIN LOAD	SUM24L-NI (PLATE)	4
31	B/K GEAR	SECC T1.0	1
32	MOTOR	FF-050SH-11190	1
33	GEAR WORM	POM (F20-03)	1
34	GERVO PCB ASSY	GLASS EPOXY 1.2T	1
35	SPECIAL SCREW	P/H TTS 2*2	4
36	S/P RO (L)	SUS304WPB	1
37	SUPPORT DAMPER	POM (F20-03)	3
38	S/P RO ®	SUS304WPB	1
39	CHASSIS MAIN	SEEC T1.0	1

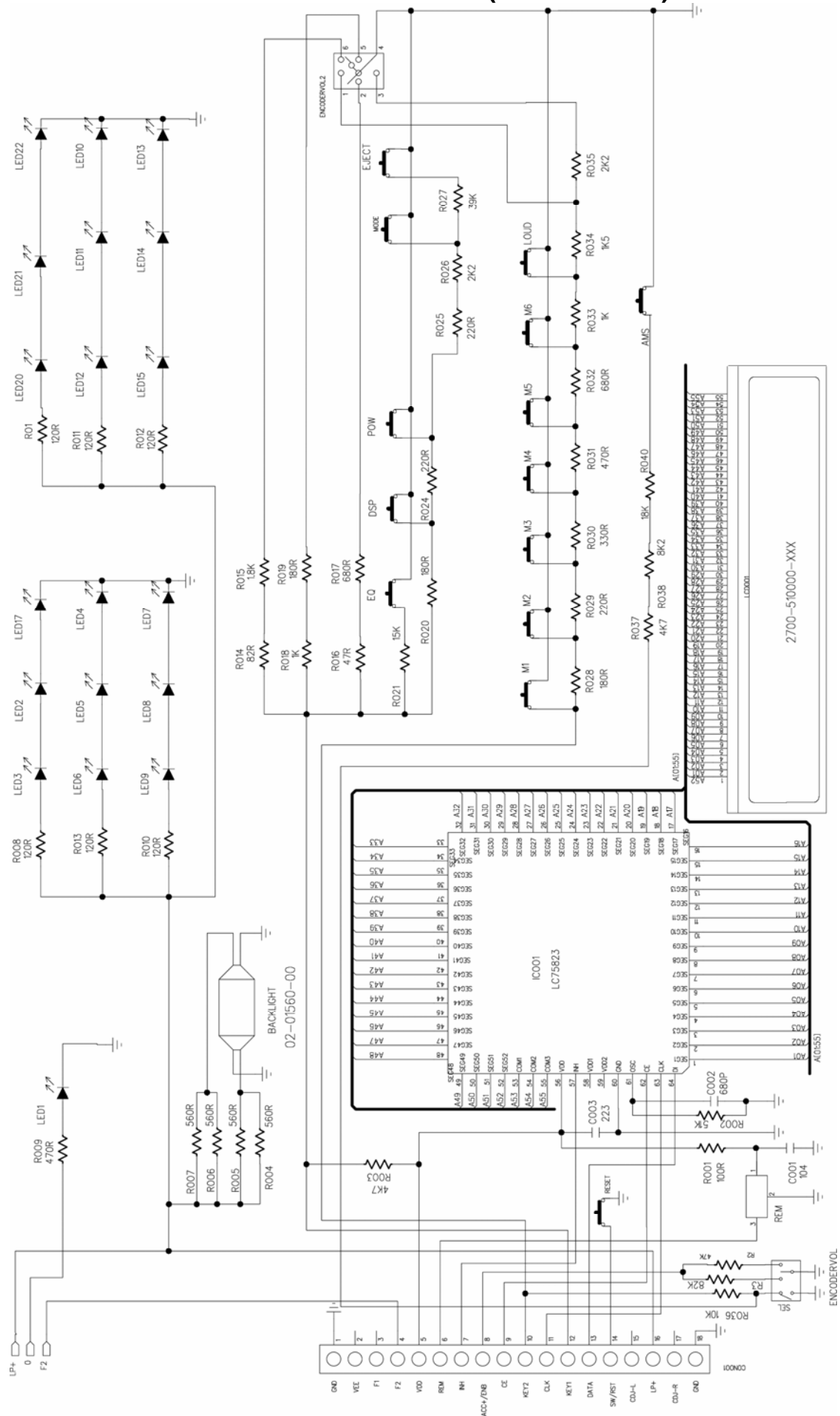
EXPLODED VIEW PARTS LIST - CONTINUED (DECK)

Ref. No.	Description	Parts No.	Q'ty
40	CLAMP DISC	POM (F20-03)	1
41	HOLD CLAMPER	SECC T1.0	1
42	S/P CLAMPER	SUS304WPB	1
43	TURN TABLE	ABS G/F 20%	1
44	BASE PU	POM (F20-03)	1
45	PIN SIDE (A)	SUM24L-NI (PLATE)	2
46	SCREW	CA/H 0" M/S 1.7*2.5	2
47	PIN SIDE (B)	SUM24L-NI(PLATE)	2
48	DAMPER	BUTHYL	1
49	S/P BASE	SUS304WPB	2
50	MOTOR	RF-400CA-12265	1
51	GEAR PU (B)	HYTRELL 5526	1
52	GEAR PU (A)	POM (F20-03)	1
53	SCREW	CA/H 0" M/S 2*2	6
54	MOTOR	FF-050SH-11190	1
55	HOUSING GEAR	POM (F20-03)	1
56	SHAFT PU	KNN11 (PCD18)	1
57	SCREW	R/H (W/W) TTB2*5	1
58	4P CONT WIRE	1007 #28	1
59	SPRING TENSION	SUS304WPB	1
60	GEAR PU ©	POM (F20-03)	1
61	LEAD SCREW	BSBM	1
62	SWITCH	SW-110	1
63	SCREW	B/H TTB1.7*8	1
64	PICK UP	SF-C99	1
65	FPC WIRE	POLY AMIDE	1
66	SPRING PU	SUS T0.2	1
67	FIBER PAPER		1
68	S/P CAM ®	0.55	1
69	TRANSIT SCREW	4.5*18	2
70	INSULATOR COVER	PE	1
71	SWITCH	SW-111	1
72	WASHER PE	PE	2
73	S/P BASE ®	SUS304WPB	2

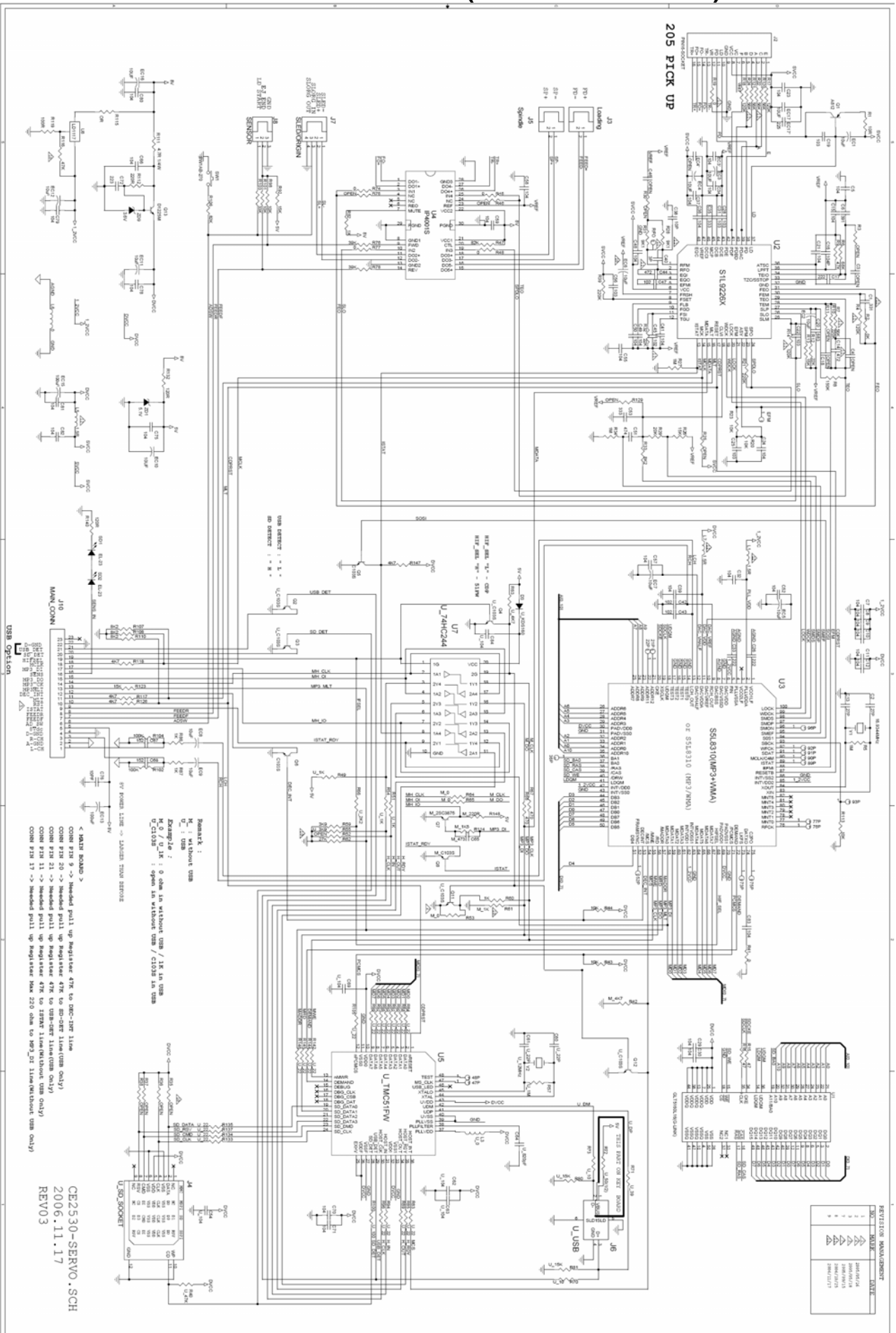
SCHEMATIC DIAGRAM (MAIN BOARD)



SCHEMATIC DIAGRAM (KEY BOARD)



SCHEMATIC DIAGRAM (CD SERVO BOARD)



ELECTRICAL PARTS LIST

Ref. No.	Part No.	Description	Q'ty
PC BOARD ASSY, MAIN BOARD			
IC804	0100-007805-00	IC,78L05 TO-92 ROHS	1
D625,D630,D639	0200-004148-02	DIODE SMD RLS4148 LL-34 ROHM ROHS	3
IC601	0300-007313-01	IC SC-7313 (SILAN) ROHS	1
IC801	0300-007388-00	IC TDA7388 (4x40W) ST "Y" ROHS	1
IC801	0300-0F8847-151	CPU RF8847-151 MP3+WMA+TC+RUSSION FONT	1
R704,R709,R710,R715	0700-063273-00	RES SMD 27KΩ ±5% 1/10W 0603 ROHS	4
	1111-500040-020C	CD(D)5000YMB9X3.90 RUSSIA) 183X152X1.6MM	1
	2500-010180-12	12PIN FFC-A 1.0MM L=180MM ROHS	1
TO KB	2500-0F1628-18A	18PIN SKT WITH FLEXIBLE PCB(DVDD1628) ROHS	1
ANT	3200-083210-01	ANT SOCKET W/GND φ 3MM L=210MM ROHS	1
Q810,305	0100-000435-00S	TR NPN BD435S TO-126 FAIRCHLD ROHS	2
Q802,809,603,104,302,304,DQ2	0100-000812-00F	2SA812-G(ROHS)	7
Q812	0100-001240-00	TRANSISTOR B1240 ROHS	1
Q105~107,Q601,Q801,803,806,808,811,3 01,303,701,DQ1	0100-003875-07F	TR NPN KTC3875-GR SOT-23 ROHS	15
IC802,803	0100-007805-00	IC,78L05 TO-92 ROHS	2
Q807	0100-008550-03	TR PNP SS8550C TO-92-B ROHS	1
D802	0200-004001-00	DIODE IN4001 DO-41 ROHS	1
D803,805	0200-004148-00A	DIODE 1N-4148 DO-35 TAPPING ROHS	2
D601,806,632,808	0200-004148-02	DIODE SMD RLS4148 LL-34 ROHM ROHS	4
D801	0200-005401-00	DIODE IN5401 DO-27 ROHS	1
ZD302	0200-050033-54	ZENER DIODE SMD 3.3V 0.5W ±2% LL-34 ROHS	1
ZD802	0200-050036-02	ZENER DIODE SMD 3.6V 0.5W ±2% LL-34 ROHS	1
ZD801	0200-050082-01	ZENER DIODE SMD 8.2V 0.5W LL-34 ROHS	1
ZD301	0200-050091-03	ZENER DIODE SMD 9.1V 0.5W ±2% LL-34 ROHS	1
ZD803	0200-050100-02	ZENER DIODE SMD 10V 0.5W ±5% LL-34 ROHS	1
IC701,702	0300-004558-26S	IC UTC4558 SOP (SILAN) ROHS	2
IC603	0300-007035-00	IC KIA7035AP TO-92 ROHS	1
IC101	0300-009257-00H	IC SC9257 ROHS	1
XT601	0400-000072-01H	CRYSTAL OSCILLATOR 7.2MHZ ±30PPM HC-49U/S ROHS	1
C805~808	0500-003102-10	CER.CAP SMD 1000PF 50V ±10% 0805 Y5P ROHS	4
C122,610,116,117,611,801~804	0500-003105-10	CER.CAP SMD 1uF 25V ±20% X7R 0805 ROHS	9
C601	0500-003270-05S	CER.CAP SMD 27PF 50V ±5% NPO 0805 ROHS	1
C602	0500-003330-05S	CER.CAP SMD 33PF 50V ±5% NPO 0805 ROHS	1
C817	0500-063101-00	CER.CAP SMD 100PF 50V ±5% NPO 0603 ROHS	1
C603,604,140	0500-063102-01	CER.CAP SMD 1000PF 50V ±10% X7R 0603 ROHS	3
C207	0500-063103-01	CER.CAP SMD 0.01uF 50V ±10% X7R 0603 ROHS	1

ELECTRICAL PARTS LIST-CONTINUED

Ref. No.	Part No.	Description	Q'ty
C110,111,607,811,833,819,663,664,630,600,839,837,818,108,123	0500-063104-01	CER.CAP SMD 0.1uF 50V ±10% X7R 0603 ROHS	15
C119,124	0500-063220-00	CER.CAP SMD 22PF 50V ±5% NPO 0603 ROHS	2
C101,105,109,605	0500-063223-01	CER.CAP SMD 0.022uF 50V ±10% X7R 0603 ROHS	4
C620~623,665,666,DC1	0500-063224-01	CER.CAP SMD 0.22uF 16V ±10% X7R 0603 ROHS	9
C615,616	0500-063272-01	CER.CAP SMD 2700PF 50V ±10% X7R 0603 ROHS	2
C814,609	0500-063474-01	CER.CAP SMD 0.47uF 25V +80/-20% Y5V 0603 ROHS	2
C661,662	0500-063682-01	CER.CAP SMD 6800PF 50V ±10% X7R 0603 ROHS	2
C606,629,617,303,304,107,838	0600-010107-01	E.CAP 100uF 10V ±20% \$ 5X7MM ROHS	7
C702	0600-010227-01	E.CAP 220uF 10V ±20% \$ 6x7MM ROHS	1
C125,C813,C608,C102	0600-010476-03	E.CAP 47uF 10V ±20% \$ 6x5MM ROHS	4
C809,C812,C106	0600-016106-02	E.CAP 10uF 16V ±20% \$ 3.5x5MM ROHS	3
C834,C835,C701	0600-016107-02	E.CAP 100uF 16V ±20% \$ 6x5MM ROHS	3
C618,C821	0600-016226-01	E.CAP 22uF 16V ±20% \$ 4x7MM ROHS	2
C712	0600-016336-02	E.CAP 33uF 16V ±20% \$ 6.3x5MM ROHS	1
C810	0600-016338-00S	E.CAP 3300uF 16V ±20% \$ 13x25MM ROHS	1
C614,619,624~627,703~706,301~302	0600-050225-02	E.CAP 0.22uF 50V ±20% \$ 4x5MM ROHS	12
C815	0600-050335-02	E.CAP 3.3uF 50V ±20% \$ 4x5MM ROHS	1
R640	0700-005022-10	RES 2.2Ω ±5% 1/2W ROHS	1
R134	0700-005047-00	RES 4.7Ω ±5% 1/4W ROHS	1
R854	0700-005100-00	RES 10Ω ±5% 1/4W ROHS	1
R620,600	0700-005100-16A	RES 10Ω ±5% 1/16W (TAPPING) ROHS	2
R837	0700-005103-16A	RES 10KΩ ±5% 1/16W (TAPPING) ROHS	1
R327,328	0700-005220-16A	RES 22Ω ±5% 1/16W (TAPPING) ROHS	2
R827,324,326	0700-005222-16A	RES 2.2KΩ ±5% 1/16W (TAPPING) ROHS	3
R813	0700-005223-16A	RES 22KΩ ±5% 1/16W (TAPPING) ROHS	1
R850	0700-005471-16A	RES 470Ω ±5% 1/16W (TAPPING) ROHS	1
R670,J63,R1	0700-063000-00	RES SMD 0Ω ±5% 1/10W 0603 ROHS ROHS	3
R135,R700/1	0700-063100-00	RES SMD 10Ω ±5% 1/10W 0603 ROHS	3
R603,103,118	0700-063101-00	RES SMD 100Ω ±5% 1/10W 0603 ROHS	3
R101,643,831,605,141,871,320~323	0700-063102-00	RES SMD 1KΩ ±5% 1/10W 0603 ROHS	10
R102,623,625,631,632,801~804,839,851,823,845,848,305,317,820,725,610,DR2,316	0700-063103-00	RES SMD 10KΩ ±5% 1/10W 0603 ROHS	21
R819,DR1	0700-063104-00	RES SMD 100KΩ ±5% 1/10W 0603 ROHS	2
R612,R616~619,DR4	0700-063105-00	RES SMD 1M ±5% 1/10W 0603 ROHS	6
R818	0700-063152-00	RES SMD 1.5KΩ ±5% 1/10W 0603 ROHS	1
R830	0700-063182-00	RES SMD 1.8KΩ ±5% 1/10W 0603 ROHS	1
R645,R646,R001	0700-063220-00	RES SMD 22Ω ±5% 1/10W 0603 ROHS	3
R636	0700-063221-00	RES SMD 220Ω ±5% 1/10W 0603 ROHS	1
R615,R633,R634,R121,R142,R872,R681, R682,R329,R330,R325,R609	0700-063222-00	RES SMD 2.2KΩ ±5% 1/10W 0603 ROHS	12
R702,R703,R805~808,R829,R858,R841~844	0700-063223-00	RES SMD 22KΩ ±5% 1/10W 0603 ROHS	12
R614,R626	0700-063224-00	RES SMD 220KΩ ±5% 1/10W 0603 ROHS	2

ELECTRICAL PARTS LIST-CONTINUED

Ref. No.	Part No.	Description	Q'ty
R814~817	0700-063274-00	RES SMD 270K Ω $\pm 5\%$ 1/10W 0603 ROHS	4
R108	0700-063331-00	RES SMD 330 Ω $\pm 5\%$ 1/10W 0603 ROHS	1
R113,R114,R629,R630,R320,R321,R326, R323,R324	0700-063332-00	RES SMD 3.3K Ω $\pm 5\%$ 1/10W 0603 ROHS	9
R607,R308	0700-063334-00	RES SMD 330K Ω $\pm 5\%$ 1/10W 0603 ROHS	2
R318,R301/2	0700-063392-00	RES SMD 3.9K Ω $\pm 5\%$ 1/10W 0603 ROHS	3
R627,R628	0700-063394-00	RES SMD 390K Ω $\pm 5\%$ 1/10W 0603 ROHS	2
R109,R663,R664	0700-063471-00	RES SMD 470 Ω $\pm 5\%$ 1/10W 0603 ROHS	3
R122,R602,R604,R611,R840,R606,R129, R130,R138,R624,DR5,852,309,120	0700-063472-00	RES SMD 4.7K Ω $\pm 5\%$ 1/10W 0603 ROHS	17
R125,R126,R608,R706,R707,R712,R713, R846,R822,R124,R137,R849,R847,R307, R641,DR3,853,310,315,119	0700-063473-00	RES SMD 47K Ω $\pm 5\%$ 1/10W 0603 ROHS	21
R613	0700-063474-00	RES SMD 470K Ω $\pm 5\%$ 1/10W 0603 ROHS	1
R622,R665,R666	0700-063512-00	RES SMD 5.1K Ω $\pm 5\%$ 1/10W 0603 ROHS	3
R809~812,R311,R331	0700-063561-00	RES SMD 560 Ω $\pm 5\%$ 1/10W 0603 ROHS	6
R661,R662	0700-063682-00	RES SMD 6.8K Ω $\pm 5\%$ 1/10W 0603 ROHS	2
R716~719	0700-063821-00	RES SMD 820 Ω $\pm 5\%$ 1/10W 0603 ROHS	4
R705,R708,R711,R714	0700-063822-00	RES SMD 8.2K Ω $\pm 5\%$ 1/10W 0603 ROHS	4
R621	0700-063823-00	RES SMD 82K Ω $\pm 5\%$ 1/10W 0603 ROHS	1
L803	0900-070100-01	MICRO INDUCTOR 10UH AXIAL TYPE ROHS	1
L801	1500-027012-11	TOROIDAL COIL XC-169-110uH V-TYPE ϕ 27x 12MM Xin- DeXing ROHS	1
OSC	3100-086120-08	SINGLE SHIELD WIRE 120MM GREY ROHS	1
PC BOARD ASSY, MAIN BOARD FM TUNER SECTION			
D633,D645	0200-004148-02	DIODE SMD RLS4148 LL-34 ROHM ROHS	2
C112,C113	0500-063153-01	CER.CAP SMD 0.015uF 50V $\pm 10\%$ X7R 0603 ROHS	2
C114,C115	0500-063682-01	CER.CAP SMD 6800PF 50V $\pm 10\%$ X7R 0603 ROHS	2
R111,R112	0700-063562-00	RES SMD 5.6K Ω $\pm 5\%$ 1/10W 0603 ROHS	2
	2900-000347-03	M.FAE347/P21/P22 EAST FUREPE 1 PACK 65-108MHJ ROHS	1
PC BOARD ASSY, MAIN BOARD AM TUNER SECTION			
C206	0500-063050-00	CER.CAP SMD 5PF 50V $\pm 5\%$ NPO 0603 ROHS	1
R210	0700-063471-00	RES SMD 470 Ω $\pm 5\%$ 1/10W 0603 ROHS	1
Q203	0100-000812-00F	2SA812-G(ROHS)	1
Q201/2	0100-003875-07F	TR NPN KTC3875-GR SOT-23 ROHS	2
C208	0500-016225-54	TAN CAP SMD 2.2uF 16V $\pm 10\%$ 3.2x1.6x1.6MM ROHS	1
C201~3	0500-063223-01	CER.CAP SMD 0.022uF 50V $\pm 10\%$ X7R 0603 ROHS	3
R209	0700-063100-00	RES SMD 10 Ω $\pm 5\%$ 1/10W 0603 ROHS	1
R208	0700-063102-00	RES SMD 1K Ω $\pm 5\%$ 1/10W 0603 ROHS	1
R201	0700-063103-00	RES SMD 10K Ω $\pm 5\%$ 1/10W 0603 ROHS	1
R202	0700-063331-00	RES SMD 330 Ω $\pm 5\%$ 1/10W 0603 ROHS	1
R207	0700-063471-00	RES SMD 470 Ω $\pm 5\%$ 1/10W 0603 ROHS	1
R205	0700-063472-00	RES SMD 4.7K Ω $\pm 5\%$ 1/10W 0603 ROHS	1
R203	0700-063473-00	RES SMD 47K Ω $\pm 5\%$ 1/10W 0603 ROHS	1

ELECTRICAL PARTS LIST-CONTINUED

Ref. No.	Part No.	Description	Q'ty
R206	0700-063822-00	RES SMD 8.2K Ω \pm 5% 1/10W 0603 ROHS	1
C204	0600-016106-02	E.CAP 10uF 16V \pm 20% \S 3.5x5MM ROHS	1
L201	0900-070470-04	M. INDUCTOR AL03T04R7 (AXIAL) ROHS	1
PC BOARD ASSY, KEY BOARD			
LED1~17,LED20~22	0200-001112-02J	LED SMD RED WL=100MCD WL=625NM 0805 WENRUN ROHS	20
B.LIGHT	0200-001730-09	LED B.L WHITE 109X20.5 ROHS	1
	0700-005332-16A	RES 3.3K 1/16W (TAPPING) ROHS	1
	2700-510000-110Y	CD173 LCD TN NEG COLOR PIN TYPE ROHS	1
IC001	0300-075823-00H	IC LC75823ED ROHS	1
C003	0500-003223-10	CER.CAP SMD 0.022uF 50V \pm 10% X7R 0805 ROHS	1
C002	0500-063681-00	CER.CAP SMD 680PF 50V \pm 5% NPO 0603 ROHS	1
R033	0700-063102-00	RES SMD 1K Ω \pm 5% 1/10W 0603 ROHS	1
R036	0700-063103-00	RES SMD 10K Ω \pm 5% 1/10W 0603 ROHS	1
R034	0700-063152-00	RES SMD 1.5K Ω \pm 5% 1/10W 0603 ROHS	1
R021	0700-063153-00	RES SMD 15K Ω \pm 5% 1/10W 0603 ROHS	1
R019,R020,R028	0700-063181-00	RES SMD 180 Ω \pm 5% 1/10W 0603 ROHS	3
R015	0700-063182-00	RES SMD 1.8K Ω \pm 5% 1/10W 0603 ROHS	1
R040	0700-063183-00	RES SMD 18K Ω \pm 5% 1/10W 0603 ROHS	1
R024,R025,R029	0700-063221-00	RES SMD 220 Ω \pm 5% 1/10W 0603 ROHS	3
R035,R026	0700-063222-00	RES SMD 2.2K Ω \pm 5% 1/10W 0603 ROHS	2
R01,008,010~13	0700-063271-00	RES SMD 270 Ω \pm 5% 1/10W 0603 ROHS	6
R030	0700-063331-00	RES SMD 330 Ω \pm 5% 1/10W 0603 ROHS	1
R027	0700-063393-00	RES SMD 39K Ω \pm 5% 1/10W 0603 ROHS	1
R016	0700-063470-00	RES SMD 47 Ω \pm 5% 1/10W 0603 ROHS	1
R031,R04,R009	0700-063471-00	RES SMD 470 Ω \pm 5% 1/10W 0603 ROHS	3
R003,R037	0700-063472-00	RES SMD 4.7K Ω \pm 5% 1/10W 0603 ROHS	2
R2	0700-063473-00	RES SMD 47K Ω \pm 5% 1/10W 0603 ROHS	1
R002	0700-063513-00	RES SMD 51K Ω \pm 5% 1/10W 0603 ROHS	1
R004~007	0700-063561-00	RES SMD 560 Ω \pm 5% 1/10W 0603 ROHS	4
R018	0700-063562-00	RES SMD 5.6K Ω \pm 5% 1/10W 0603 ROHS	1
R017,R032	0700-063681-00	RES SMD 680 Ω \pm 5% 1/10W 0603 ROHS	2
R014	0700-063820-00	RES SMD 82 Ω \pm 5% 1/10W 0603 ROHS	1
R038	0700-063822-00	RES SMD 8.2K Ω \pm 5% 1/10W 0603 ROHS	1
R3	0700-063823-00	RES SMD 82K Ω \pm 5% 1/10W 0603 ROHS	1
	1121-510030-3008	CD-F5100 SMD KB D/S 1.2X168X41.7MM	1
CON0019	1600-000903-00	JOG SWITCH KQU-903 L=10MM ROHS	1
SW	1600-001107-02S	TACT SW KPT-1107CD 4.3 2P IN RED	3
EJECT	1600-001140-04A	SWITCH TACT SMD KPS-1107SW 6.1x3.7x2.5MM TAPPING ROHS	1
	1600-021130-01X	SWITCH TACT SMD 6x3.5x4.3MM (BLACK) XY5 ROHS	10
J1	1800-000115-00P	VOL ENCODER EC11E15D4MA1 12x11.7x14.5MM POSTEC ROHS	1
CON001	2500-0M2159-18	18PIN PLUG ROHS	1
PC BOARD ASSY, SDK/CD SERVO BOARD			
R303,R304	0700-063332-00	RES SMD 3.3K Ω \pm 5% 1/10W 0603 ROHS	2

ELECTRICAL PARTS LIST-CONTINUED

Ref. No.	Part No.	Description	Q'ty
DECK TO MB	2500-009286-18	FFC WIRE(UNILATERAL PLUG)130MM 18PIN P=1.25MM ROHS	1
DECK TO MB	2500-011101-18	SOCKET 18PIN P=1.25 TOP-CONTACT H-TYPE (NEGATIVE- NEEDLE) JingShi ROHS	1
Q5,6,8	0100-000103-00	TR. KEC103S ROHS	3
Q1	0100-000812-00F	2SA812-G(ROHS)	1
Q7	0100-003875-07F	TR NPN KTC3875-GR SOT-23 ROHS	1
ZD9	0200-050036-54	ZENER DIODE SMD 3.6V 0.5W ±5% LL-34 ROHS	1
ZD1	0200-050151-00	ZENER DIODE SMD 5.1V 0.5W LL-34 ROHS	1
U8	0300-001117-00	VOLTAQE REGULATOR LD1117S ROHS	1
U3	0300-008310-01	SAMSUNG MP3 AND WMA DECODER S5L8310 ROHS	1
U2	0300-009226-00K	IC S1L9226 ROHS	1
U4	0300-009259-00S	IC SC9259 (SILAN) ROHS	1
U1	0300-016100-01	SDRAM IS42S16100C1-7TI TSOP-50 ISSI ROHS	1
Y1	0400-000169-01	CRYSTAL 16.9344MHZ±30PPM HC-49U/SM 20PF SM-1225 ROHS	1
C40	0500-063030-00	CER.CAP SMD 3PF 50V ±5% NPO 0603 ROHS	1
C76,38	0500-063100-00	CER.CAP SMD 10PF 50V ±5% NPO 0603 ROHS	2
C42,43,45,C47	0500-063102-01	CER.CAP SMD 1000PF 50V ±10% X7R 0603 ROHS	4
C19,22,25,28,31,56	0500-063103-01	CER.CAP SMD 0.01uF 50V ±10% X7R 0603 ROHS	6
C5,7~12,15,21,23,24,29,30/2/4/6/7/9,41,48 ~50,52/5,57~59,66,70,71,78~83,38,16,EC 3A	0500-063104-01	CER.CAP SMD 0.1uF 50V ±10% X7R 0603 ROHS	39
C67,68	0500-063152-00N	CER.CAP SMD 1500PF 50V ±5% NPO 0603 ROHS	2
C17,26,33	0500-063222-01	CER.CAP SMD 2200PF 50V ±10% X7R 0603 ROHS	3
C72	0500-063223-01	CER.CAP SMD 0.022uF 50V ±10% X7R 0603 ROHS	1
EC17A	0500-063225-00	CER.CAP SMD 2.2uF 16V ±10% Y5V 0805N+ ROHS	1
C2,13	0500-063270-00	CER.CAP SMD 27PF 50V ±5% NPO 0603 ROHS	2
C1	0500-063331-00	CER.CAP SMD 330PF 50V ±5% NPO 0603 ROHS	1
C53,35	0500-063333-01	CER.CAP SMD 0.033uF 50V ±10% X7R 0603 ROHS	2
C6	0500-063391-00	CER.CAP SMD 390PF 50V ±5% NPO 0603 ROHS	1
C14,44	0500-063472-01	CER.CAP SMD 4700PF 50V ±10% X7R 0603 ROHS	2
C65	0500-063473-01	CER.CAP SMD 0.047uF 50V ±10% X7R 0603 ROHS	1
C51	0500-063474-01	CER.CAP SMD 0.47uF 25V +80/-20% Y5V 0603 ROHS	1
C20	0500-063683-01	CER.CAP SMD 0.068uF 50V ±10% X7R 0603 ROHS	1
EC1~5,7~9,16,11,17,EC6	0600-016106-54	E.CAP SMD 10uF ±10% 16V \$ 4x5.5MM ROHS	12
EC13,15	0600-016107-54	E.CAP SMD 100uF 16V ±10% \$ 6.3x5.5MM ROHS	2

ELECTRICAL PARTS LIST-CONTINUED

Ref. No.	Part No.	Description	Q'ty
L6,R115	0700-005000-54	RES SMD 0Ω ±5% 1/10W 0805 ROHS	2
L1,5,7	0700-005015-54	RES SMD 1.5Ω +/-5% 1/10W 0805 ROHS	3
R19,41,45,48,53,64,65,74,77,50,2	0700-063000-00	RES SMD 0Ω ±5% 1/10W 0603 ROHS ROHS	11
R1	0700-063100-00	RES SMD 10Ω ±5% 1/10W 0603 ROHS	1
R60,61,82,86,87	0700-063102-00	RES SMD 1KΩ ±5% 1/10W 0603 ROHS	5
R20,23,43,44,98,101,113	0700-063103-00	RES SMD 10KΩ ±5% 1/10W 0603 ROHS	7
R102,104	0700-063104-00	RES SMD 100KΩ ±5% 1/10W 0603 ROHS	2
R5,27,34	0700-063105-00	RES SMD 1M ±5% 1/10W 0603 ROHS	3
R119,132,140	0700-063121-00	RES SMD 120Ω ±5% 1/10W 0603 ROHS	3
R4,14,17,18	0700-063124-00	RES SMD 120KΩ ±5% 1/10W 0603 ROHS	4
R114	0700-063152-00	RES SMD 1.5KΩ ±5% 1/10W 0603 ROHS	1
R13,26,92,123	0700-063153-00	RES SMD 15KΩ ±5% 1/10W 0603 ROHS	4
R8	0700-063154-00	RES SMD 150KΩ ±5% 1/10W 0603 ROHS	1
R29	0700-063203-00	RES SMD 20KΩ ±5% 1/10W 0603 ROHS	1
R112/48	0700-063221-00	RES SMD 220Ω ±5% 1/10W 0603 ROHS	2
R32,12	0700-063223-00	RES SMD 22KΩ ±5% 1/10W 0603 ROHS	2
R39,10,21	0700-063224-00	RES SMD 220KΩ ±5% 1/10W 0603 ROHS	3
R62	0700-063273-00	RES SMD 27KΩ ±5% 1/10W 0603 ROHS	1
R103	0700-063333-00	RES SMD 33KΩ ±5% 1/10W 0603 ROHS	1
R59	0700-063392-00	RES SMD 3.9KΩ ±5% 1/10W 0603 ROHS	1
R76,78	0700-063393-00	RES SMD 39KΩ ±5% 1/10W 0603 ROHS	2
R15,16	0700-063470-00	RES SMD 47Ω ±5% 1/10W 0603 ROHS	2
R67,68	0700-063471-00	RES SMD 470Ω ±5% 1/10W 0603 ROHS	2
R42,117,118,126,147	0700-063472-00	RES SMD 4.7KΩ ±5% 1/10W 0603 ROHS	5
R9,116	0700-063473-00	RES SMD 47KΩ ±5% 1/10W 0603 ROHS	2
R7,22,24,120,121	0700-063563-00	RES SMD 56KΩ ±5% 1/10W 0603 ROHS	5
R6	0700-063683-00	RES SMD 68KΩ ±5% 1/10W 0603 ROHS	1
R33,107,108,110	0700-063822-00	RES SMD 8.2KΩ ±5% 1/10W 0603 ROHS	4
R47,106	0700-063823-00	RES SMD 82KΩ ±5% 1/10W 0603 ROHS	2
R28,31	0700-063912-00	RES SMD 9.1KΩ ±5% 1/10W 0603 ROHS	2
	1121-205031-2008	PCB SAMSUNG USB SERVO(205) 96X89.1X1.2	1
Q3	0100-001858-17	TR 2SD1858-Q ATV ROHM ROHS	1
SD1,2	0200-000144-00	IR LED MIE 144A1MC ROHS	2
R111	0700-005047-00	RES 4.7Ω ±5% 1/4W ROHS	1
SW1	1600-000111-00	SWITCH PUSH LEVER SW-111 8x5.3x3.8MM SHINMEI ROHS	1
J8	2500-000090-03	RAINBOW WIRE 90MM 3PIN AWG30# ROHS	1
J2	2500-001300-16	SOCKET SMD 16PIN P=1.0MM BOTTOM-CONTACT H-TYPE HongDongXing ROHS	1
J7	2500-053015-20E	SOCKET 4PIN CD DECK BoMu ROHS	1
PC BOARD ASSY, MAIN BOARD LINE OUT SECTION			
C707,C708	0600-050105-03	E.CAP 1uF 50V ±20% 4x5MM ROHS	2
R721,R722	0700-063102-00	RES SMD 1KΩ ±5% 1/10W 0603 ROHS	2
	2000-020360-08	RCA CABLE WIRE 360MM GREY ROHS	1
PC BOARD ASSY, LAMP BOARD			
Q402	0100-008050-03	TR NPN SS8050C TO-92-B ROHS	1
LED	0200-030000-02	LED RED LUM=6MCD WL=700NM 3MM ROHS	1

ELECTRICAL PARTS LIST-CONTINUED

Ref. No.	Part No.	Description	Q'ty
LAMP	0200-030553-60T	LAMP 3V 60MA ϕ 3X5.5MM KEE TAT ROHS	1
DTHSO TO GND	0500-063104-01	CER.CAP SMD 0.1uF 50V \pm 10% X7R 0603 ROHS	1
R406	0700-005101-00	RES 100 Ω \pm 5% 1/14W ROHS	1
R408	0700-005103-16A	RES 10K Ω \pm 5% 1/16W (TAPPING) ROHS	1
J6	0700-005332-16A	RES 3.3K 1/16W (TAPPING) ROHS	1
	1111-510020-3500	PCB CD-032X2 LB 1.0MM 41X18	1
REST	1600-001230-00	TACT SWITCH JTP-1230 ROHS	1
SW	1600-051377-00K	SWITCH PUSH SPPB51377A(DS-20) 6.3x3x 8.5MM KONEX ROHS	1
ACC GND LED RST	2500-003060-04	RIBBON CABLE #30 4PIN 60MM ROHS	1
	8100-010308-06	LAMP COVER ϕ 3X8MM BLUE ROHS	1

SPECIFICATIONS

T. H. D.....	Less than 0.35%
Signal to Noise Ratio	More than 60 dB
Channel Separation.....	More than 60 dB
Frequency Response	20Hz-20kHz
Stereo Separating (FM)	30 dB (at 1kHz)
Signal to Noise Ratio (FM)	Better than 50 dB
Output Power.....	4 X 40W
Speaker Output Impedance.....	4 To 8 ohm
Power Source	DC 12V, Negative ground.
Frequency Range	FM 65.0 – 74.0MHz (FM 87.5 – 108.0MHz)
.....	MW 530-1710 kHz
Sensitivity.....	FM 3 μ V (S/N=30dB)
.....	MW 32 dB μ (S/N=20 dB)

Specifications are subject to change without notice.